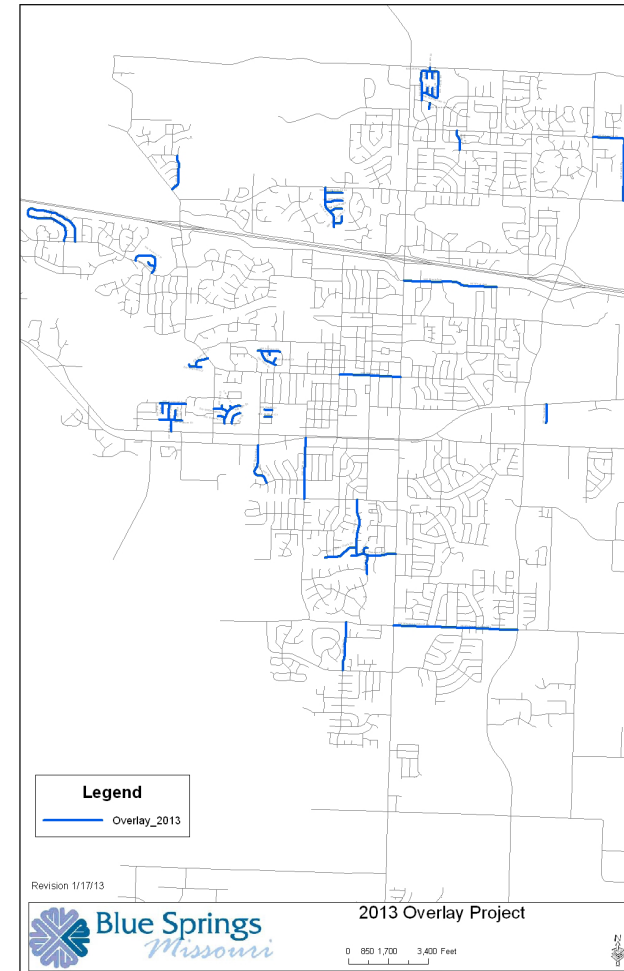


## Important Program Information

- Paving will be postponed by rain. Paving may start on the first day of dry weather without additional notice. If the contractor is unable to complete the overlay in one day, both lanes of the street will be OPEN OVERNIGHT, and the overlay operations will continue the next morning at 7 a.m.
- The street WILL be closed during portions of the milling and paving activities. There will be access at all times in case of an emergency. We recommend that you avoid construction areas. Parking on adjacent streets is recommended during the daytime. Parking in driveways is recommended if you do not plan on moving the vehicle during daytime hours.
- Fresh oil can damage the finish on your car or stain surfaces, such as concrete, carpet, or flooring when tracked from the construction areas. If you drive through a posted construction area, YOU are responsible for any oil damage to your vehicle or property.
- Small piles of construction debris may be left on streets overnight. The contractor will sweep all streets within 14 days of project completion.



**Thank you for your assistance!**

City of Blue Springs, Engineering Division, (816) 228-0121.

The 2013 Street Overlay Program is currently underway.

This annual maintenance program repaves streets and makes concrete repairs.

Installation of Americans with Disabilities Act (ADA) ramps and repairs to sidewalks have been incorporated into the program to create safe, walkable paths and meet federal requirements.

# The Street Overlay Program Includes:

1

## Sidewalk Maintenance

Unsafe sidewalks will be repaired using two methods, shaving or replacement. Shaving is a cost effective method of repair for many sidewalk defects and will be used wherever practical. Panels not conducive to shaving will be replaced.



2

## Curb Repair and ADA Ramps

Curb repairs are made before street resurfacing in order to avoid damaging the new pavement whenever possible. Curb repairs and ADA ramps will be installed at the same time. If curb repairs prevent driveway access, the resident will notified in advance of any repair.



3

## Street Milling

Milling will remove some of the existing asphalt pavement in preparation for overlaying the street. Milling will allow the new surface to match the edge of the curb. There will be a bump along the curb and at the end of the street. Residents will be notified before milling begins.



4

## Overlay

An asphalt overlay will be placed within 2 weeks of the street milling. You will receive an additional notice before the overlay begins.

